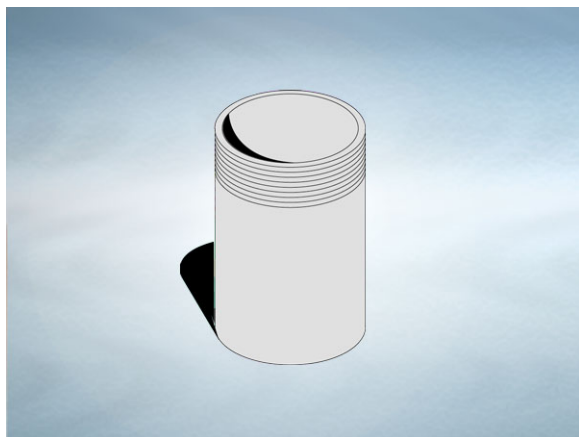


Product Details

T303 Adaptor

Technical Data

**Dimensions:**

160 dia. overall size

166 - Length

Connection - 160mm Plastic (6")

Materials - ABS

Weight - 0.6 kg

General Description:

ABS T series Threaded Pipework Adaptor, with 6" BSP inlet and 160 dia. outlet. Spigot adaptor, enables gullies with BSP threaded outlet to be connected to pipework. Longer spigots can be made in 10mm increments up to 900mm. To specify/order add suffix "-" and length (mm).

Materials:

ABS: Used for bodies, dip tubes, extensions and spigot adaptors. A cost effective, fire resistant material.

All dimensions are in millimetres unless stated. In line with general practice all dimensions shown are nominal.

Wade International

Third Avenue, Halstead, Essex, CO9 2SX.

Telephone: +44 (0)1787 475151

Fax: +44 (0)1787 475579

e-mail: wadetech@alumascwms.co.uk

website: <https://www.alumascwms.co.uk/brands/wade/>

Dimensioned Section for T303:

